



TO: ALL HOLDERS OF ATTENDANT SEAT INSTALLATION COMPONENTS COMPONENT MAINTENANCE
MANUAL 25-25-03

REVISION NO. 6 DATED MAR 01/02

HIGHLIGHTS

Pages which have been added or revised are outlined below together with the highlights of the revision. Remove and insert the affected pages as listed and enter Revision No. and date to the Record of Revision Sheet.

CHAPTER/SECTION

AND PAGE NO.

1034

DESCRIPTION OF CHANGE

Converted foldout graphics to standard size. Graphic content unrevised.

25-25-03

HIGHLIGHTS

01.1

Page 1

Mar 01/02

ATTENDANT SEAT INSTALLATION COMPONENTS

NO ASSIGNED PART NUMBER

(REFER TO CMM 25-25-04 FOR MORE
DATA ON THESE COMPONENTS)

COMPONENT MAINTENANCE MANUAL
WITH
ILLUSTRATED PARTS LIST

25-25-03

TITLE PAGE

Page 1

Nov 01/01

01.1

REVISION RECORD

- Retain this record in front of manual. On receipt of revision, insert revised pages in the manual, and enter revision number, date inserted and initial.

REVISION NUMBER	REVISION DATE	DATE FILED	BY	REVISION NUMBER	REVISION DATE	DATE FILED	BY

TEMPORARY REVISION AND SERVICE BULLETIN RECORD

BOEING SERVICE BULLETIN	BOEING TEMPORARY REVISION	OTHER DIRECTIVE	DATE OF INCORPORATION INTO MANUAL
SB 25-23		PRR B11058 MC B1252-064 PRR 10977	APR 10/84 APR 10/84 OCT 10/84

25-25-03

TR & SB RECORD

01.1

Page 1

Oct 10/84

PAGE	DATE	CODE	PAGE	DATE	CODE
25-25-03			REPAIR-GENERAL		
			601	JUL 01/98	01.1
			602	APR 10/84	01
TITLE PAGE			REPAIR 1-1		
1	NOV 01/01	01.1	601	APR 10/84	01
2	BLANK		602	BLANK	
REVISION RECORD			REPAIR 2-1		
1	APR 10/84	01	601	APR 10/84	01
2	BLANK		602	BLANK	
TR & SB RECORD			REPAIR 3-1		
1	OCT 10/84	01.1	601	APR 10/84	01
2	BLANK		602	APR 10/84	01
LIST OF EFFECTIVE PAGES			REPAIR 4-1		
*1	MAR 01/02	01	601	JUL 01/98	01.1
THRU LAST PAGE			602	BLANK	
CONTENTS			REPAIR 5-1		
1	APR 10/84	01	601	APR 10/84	01
2	BLANK		602	APR 10/84	01
INTRODUCTION			603	APR 10/84	01
1	APR 10/84	01	604	APR 10/84	01
2	BLANK		ASSEMBLY		
DESCRIPTION & OPERATION			701	APR 10/84	01
1	APR 10/84	01	702	APR 10/84	01
2	BLANK		ILLUSTRATED PARTS LIST		
DISASSEMBLY			1001	APR 10/84	01
301	APR 10/84	01	1002	APR 10/84	01
302	BLANK		1003	APR 10/84	01
CLEANING			1004	APR 10/84	01
401	APR 10/84	01	1005	APR 10/84	01
402	BLANK		1006	APR 10/84	01
CHECK			1007	NOV 01/01	01.1
501	APR 10/84	01	1008	NOV 01/01	01.1
502	BLANK		1009	APR 10/84	01
			1010	APR 10/84	01
			1011	BLANK	
			1012	JUL 10/85	01.1

* = REVISED, ADDED OR DELETED

25-25-03

EFFECTIVE PAGES
 CONTINUED Page 1
 01 Mar 01/02

PAGE	DATE	CODE	PAGE	DATE	CODE
ILLUSTRATED PARTS LIST		CONT.			
1013	OCT 10/84	01.1			
1014	OCT 01/92	01.1			
1015	BLANK				
1016	APR 10/84	01			
1017	APR 10/84	01			
1018	APR 10/84	01			
1019	BLANK				
1020	APR 10/84	01			
1021	APR 10/84	01			
1022	APR 10/84	01			
1023	APR 10/84	01			
1024	BLANK				
1025	APR 10/84	01			
1026	APR 10/84	01			
1027	APR 10/84	01			
1028	APR 10/84	01			
1029	BLANK				
1030	APR 10/84	01			
1031	OCT 10/84	01.1			
1032	BLANK				
1033	BLANK				
*1034	MAR 01/02	01.1			
1035	APR 10/84	01			
1036	APR 10/84	01			
1037	BLANK				
1038	APR 10/84	01			
1039	NOV 01/01	01.1			
1040	APR 10/84	01			

* = REVISED, ADDED OR DELETED

25-25-03

EFFECTIVE PAGES
 LAST PAGE Page 2
 01 Mar 01/02

TABLE OF CONTENTS

<u>Paragraph Title</u>	<u>Page</u>
Description and Operation	1
Testing/Trouble Shooting (not applicable)	
Disassembly	301
Cleaning.	401
Check	501
Repair.	601
Assembly.	701
Fits and Clearances (not applicable)	
Special Tools (not applicable)	
Illustrated Parts List.	1001

INTRODUCTION

The instructions in this manual provide the information necessary to perform maintenance functions ranging from simple checks and replacement to complete shop-type repair.

This manual is divided into separate sections:

- | | |
|----------------------------------------------------|------------------------------|
| 1. Title Page | 4. List of Effective Pages |
| 2. Record of Revisions | 5. Table of Contents |
| 3. Temporary Revision &
Service Bulletin Record | 6. Introduction |
| | 7. Procedures & IPL Sections |

Refer to the Table of Contents for the page location of applicable sections. An asterisked flagnote *[] in place of the page number indicates that no special instructions are provided since the function can be performed using standard industry practices.

The beginning of the REPAIR section includes a list of the separate repairs, a list of applicable standard Boeing practices, and an explanation of the True Position Dimensioning symbols used.

An explanation of the use of the Illustrated Parts List is provided in the Introduction to that section.

All weights and measurements used in the manual are in English units, unless otherwise stated. When metric equivalents are given they will be in parentheses following the English units.

Design changes, optional parts, configuration differences and Service Bulletin modifications create alternate part numbers. These are identified in the Illustrated Parts List (IPL) by adding an alphabetical character to the basic item number. The resulting item number is called an alpha-variant. Throughout the manual, IPL basic item number references also apply to alpha-variants unless otherwise indicated.

25-25-03

INTRODUCTION

01

Page 1

Apr 10/84

ATTENDANT SEAT INSTALLATION COMPONENTS

DESCRIPTION AND OPERATION

1. The attendant seat installation components comprise various assemblies of bumper strips, restraint system, backrest support panel, access door, bumper strip mounting brackets, seat base, seat back, foam cushions and fabric covers. These components are installed together on the airplane to create an attendant seat.

25-25-03

DESCRIPTION & OPERATION

01

Page 1

Apr 10/84

DISASSEMBLY

NOTE: Disassemble this component only as necessary to complete fault isolation, determine the serviceability of parts, perform required repairs, and restore the unit to serviceable condition.

1. Parts Replacement

NOTE: The following parts are recommended for replacement. Unless otherwise noted, actual replacement of parts may be based on in-service experience.

A. Nuts (10, IPL Fig. 3; 5, 40, IPL Fig. 5; 5, 35, IPL Fig. 7)

2. Disassembly

A. Disassemble the attendant seat components using standard industry practices.

NOTE: Do not disassemble bonded parts. Do not disassemble parts which are held together by rivets unless necessary for repair or replacement.

25-25-03

DISASSEMBLY

01

Page 301

Apr 10/84

CLEANING

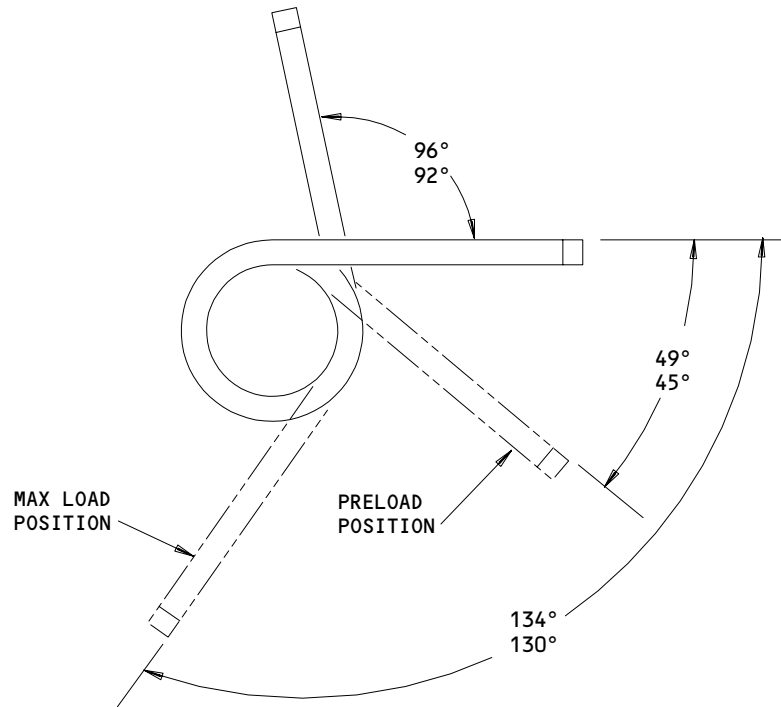
1. Clean all metal parts using standard industry practices and information contained in 20-30-03.
2. Clean all plastic parts and seat coverings with mild soap and water solution.

25-25-03

01
CLEANING
Page 401
Apr 10/84

CHECK

1. Check all parts for obvious defects in accordance with standard industry practices.
2. Magnetic particle check springs (115, 120, IPL Fig. 5, 7).
3. Check springs (115, 120, IPL Fig. 5, 7; Fig. 501).
 - A. Check that moment is 22.5-27.5 lb-ins. at preload position.
 - B. Check that moment is 59.4-72.6 lb-ins. at maximum load position.



Spring Check
Figure 501

119761

25-25-03

CHECK
Page 501
Apr 10/84

REPAIR – GENERAL

1. Content

- A. Repair, refinish and replacement procedures are included in separate sections as follows:

<u>P/N</u>	<u>NAME</u>	<u>REPAIR</u>
414T2101-1, -2	CAM	1-1
414T2101-7, -8	SIDE RAIL	2-1
414T2107	BRACKET, PIVOT	3-1
- - -	VELCRO TAPE REPLACEMENT	4-1
- - -	MISC PARTS REFINISH	5-1

2. Standard Practices

- A. Refer to the following standard practices as applicable, for details of procedures in individual repairs.

20-30-02	Stripping of Protective Finishes
20-30-03	General Cleaning Procedures
20-30-88	Final Cleaning of Metal Prior to Non-Structural Bonding
20-41-01	Decoding Table for Boeing Finish Codes
20-41-02	Application of Chemical and Solvent Resistant Finishes
20-43-01	Chromic Acid Anodizing
20-50-03	Bushing Installation and Retention

3. Materials

NOTE: Equivalent substitutes may be used.

- A. Solvent -- Series 88 (Ref 20-20-88)
- B. Adhesive -- EC1458 (BMS 5-30) (Ref 20-50-12)
- C. Primer -- BMS 10-11, type 1 (Ref 20-60-02)
- D. Primer -- BMS 10-83, type 1 (Ref 20-60-02)
- E. Enamel -- BMS 10-83, type 2 (Ref 20-60-02)

25-25-03

REPAIR-GENERAL

01.1

Page 601

Jul 01/98

4. Dimensioning Symbols

A. Standard True Position Dimensioning Symbols used in applicable repair procedures are shown in Fig. 601.

<p>— STRAIGHTNESS</p> <p>▭ FLATNESS</p> <p>⊥ PERPENDICULARITY (OR SQUARENESS)</p> <p>// PARALLELISM</p> <p>○ ROUNDNESS</p> <p>⊘ CYLINDRICITY</p> <p>⌒ PROFILE OF A LINE</p> <p>△ PROFILE OF A SURFACE</p> <p>◎ CONCENTRICITY</p> <p>≡ SYMMETRY</p> <p>∠ ANGULARITY</p> <p>↗ RUNOUT</p>	<p>⊕ THEORETICAL EXACT POSITION OF A FEATURE (TRUE POSITION)</p> <p>∅ DIAMETER</p> <p>BASIC (BSC) OR DIM A THEORETICALLY EXACT DIMENSION USED TO DESCRIBE SIZE, SHAPE OR LOCATION OF A FEATURE FROM WHICH PERMISSIBLE VARIATIONS ARE ESTABLISHED BY TOLERANCES ON OTHER DIMENSIONS OR NOTES.</p> <p>—A— DATUM</p> <p>Ⓜ MAXIMUM MATERIAL CONDITION (MMC)</p> <p>Ⓢ REGARDLESS OF FEATURE SIZE (RFS)</p> <p>Ⓟ PROJECTED TOLERANCE ZONE</p>
----------------------------------------------------------------------------------------------------------------------------------------------------------------------------------------------------------------------------------------------------------------------------------------	-----------------------------------------------------------------------------------------------------------------------------------------------------------------------------------------------------------------------------------------------------------------------------------------------------------------------------------------------------------------------------------------------------------------------------------------

EXAMPLES

<p>— 0.002</p> <p>⊥ B 0.002</p> <p>// A 0.002</p> <p>○ 0.002</p> <p>⊘ 0.010</p> <p>⌒ A 0.006</p> <p>△ A 0.020</p>	<p>STRAIGHT WITHIN 0.002</p> <p>PERPENDICULAR TO B WITHIN 0.002</p> <p>PARALLEL TO A WITHIN 0.002</p> <p>ROUND WITHIN 0.002</p> <p>CYLINDRICAL SURFACE MUST LIE BETWEEN TWO CONCENTRIC CYLINDERS, ONE OF WHICH HAS A RADIUS 0.010 INCH GREATER THAN THE OTHER</p> <p>EACH LINE ELEMENT OF THE SURFACE AT ANY CROSS SECTION MUST LIE BETWEEN TWO PROFILE BOUNDARIES 0.006 INCH APART IN RELATION TO DATUM PLANE A</p> <p>SURFACES MUST LIE WITHIN PARALLEL BOUNDARIES 0.02 INCH APART AND EQUALLY DISPOSED ABOUT TRUE PROFILE</p>	<p>◎ C ∅ 0.0005</p> <p>≡ A 0.010</p> <p>∠ A 0.005</p> <p>⊕ B ∅ 0.002 Ⓢ</p> <p>⊥ A ∅ 0.010 Ⓜ 0.510 Ⓟ</p> <p>2.000</p> <p>OR</p> <p>2.000 BSC</p>	<p>CONCENTRIC TO C WITHIN 0.0005 DIAMETER (FULL INDICATOR MOVEMENT)</p> <p>SYMMETRICAL WITH A WITHIN 0.010</p> <p>ANGULAR TOLERANCE 0.005 WITH A</p> <p>LOCATED AT TRUE POSITION WITHIN 0.002 DIA IN RELATION TO DATUM B, REGARDLESS OF FEATURE SIZE</p> <p>AXIS IS TOTALLY WITHIN A CYLINDER OF 0.010-INCH DIAMETER, PERPENDICULAR TO, AND EXTENDING 0.510-INCH ABOVE, DATUM A, MAXIMUM MATERIAL CONDITION</p> <p>EXACT DIMENSION IS 2.000</p>
-------------------------------------------------------------------------------------------------------------------	----------------------------------------------------------------------------------------------------------------------------------------------------------------------------------------------------------------------------------------------------------------------------------------------------------------------------------------------------------------------------------------------------------------------------------------------------------------------------------------------------------------------------------	---------------------------------------------------------------------------------------------------------------------------------------------------------	-------------------------------------------------------------------------------------------------------------------------------------------------------------------------------------------------------------------------------------------------------------------------------------------------------------------------------------------------------------------------------------------------------------------------------------------------

True Position Dimensioning Symbols
Figure 601

25-25-03

REPAIR-GENERAL

01 Page 602

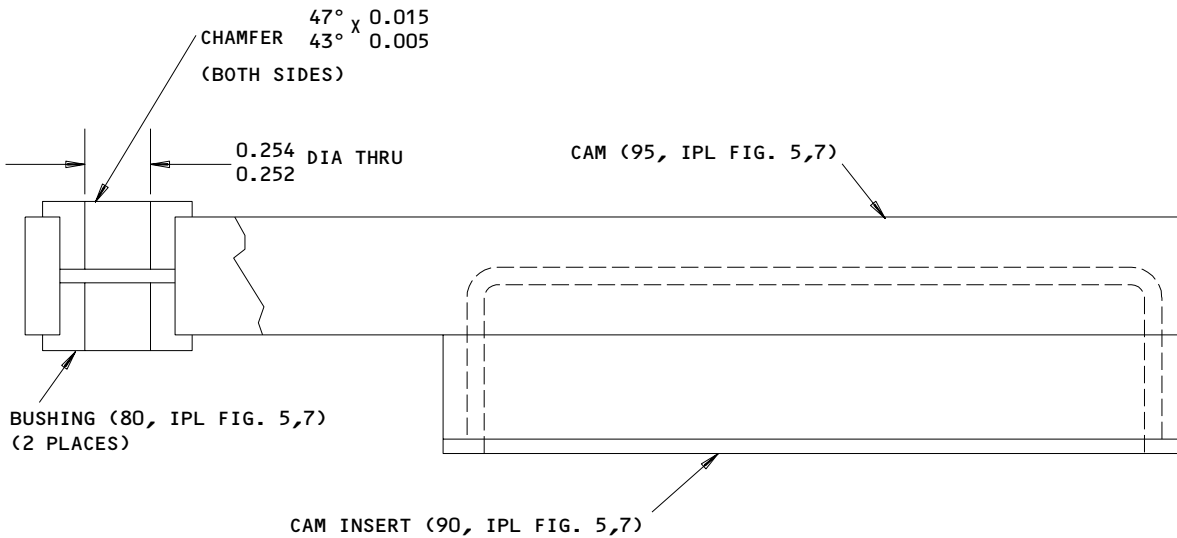
Apr 10/84

CAM ASSY - REPAIR 1-1
414T2101-1, -2

NOTE: Refer to REPAIR-GEN for list of applicable standard practices. For repair of surfaces which may only require stripping and restoration of original finish, refer to REFINISH instruction, Fig. 601.

1. Bushing Replacement (Fig. 601)

- A. Remove bushing.
- B. Install replacement bushing per 20-50-03 and machine to dimension shown.



125/√ ALL MACHINED SURFACES
ALL DIMENSIONS ARE IN INCHES

414T2101-1 SHOWN
Bushing Replacement
Figure 601

119763

25-25-03

REPAIR 1-1

01

Page 601

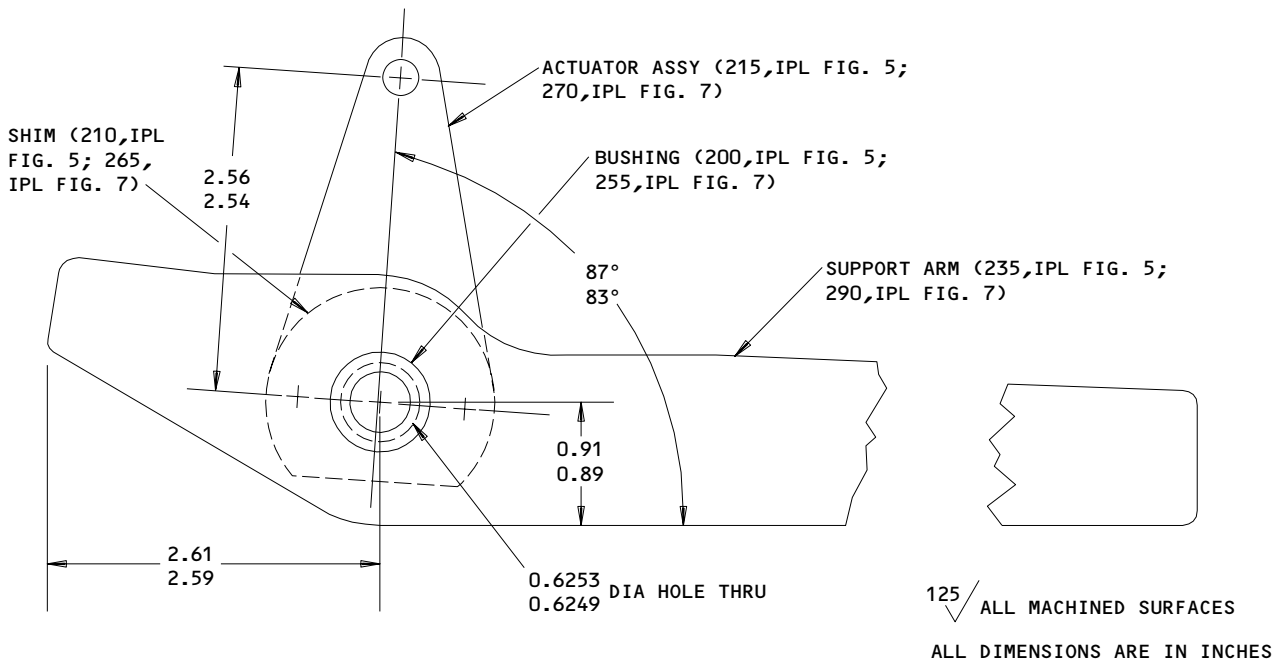
Apr 10/84

SIDE RAIL ASSY - REPAIR 2-1
414T2101-7, -8

NOTE: Refer to REPAIR-GEN for list of applicable standard practices.

1. Parts Replacement (Fig. 601)

- A. Remove rivets (205, IPL Fig. 5 or 260, IPL Fig. 7), shim (210, IPL Fig. 5 or 265, IPL Fig. 7) as required.
- B. Remove bushing (200, IPL Fig. 5 or 255, IPL Fig. 7) as required.
- C. Position cam actuator assembly and shim on support arm (235, 240, IPL Fig. 5 or 290, 295, IPL Fig. 7) and secure with rivets.
- D. Drill 0.6249-0.6253 in. dia. hole thru support arm, shim and cam actuator assembly at location indicated.
- E. Install bushing per 20-50-03.



414T2107-7 SHOWN
Parts Replacement
Figure 601

119883

25-25-03

REPAIR 2-1

01

Page 601

Apr 10/84

PIVOT BRACKET ASSY REPAIR 3-1
414T2107-3 THRU -6

NOTE: Refer to REPAIR-GEN for list of applicable standard practices. For repair of surfaces which may only require stripping and restoration of original finish, refer to REFINISH instruction, Fig. 601.

1. Bushing Replacement (Fig. 601)

- A. Remove bushing.
- B. Install bushing using shrink fit method per 20-50-03.
- C. Drill hole thru bushing as indicated, if required.
- D. Machine bushing I.D. to dimension shown.

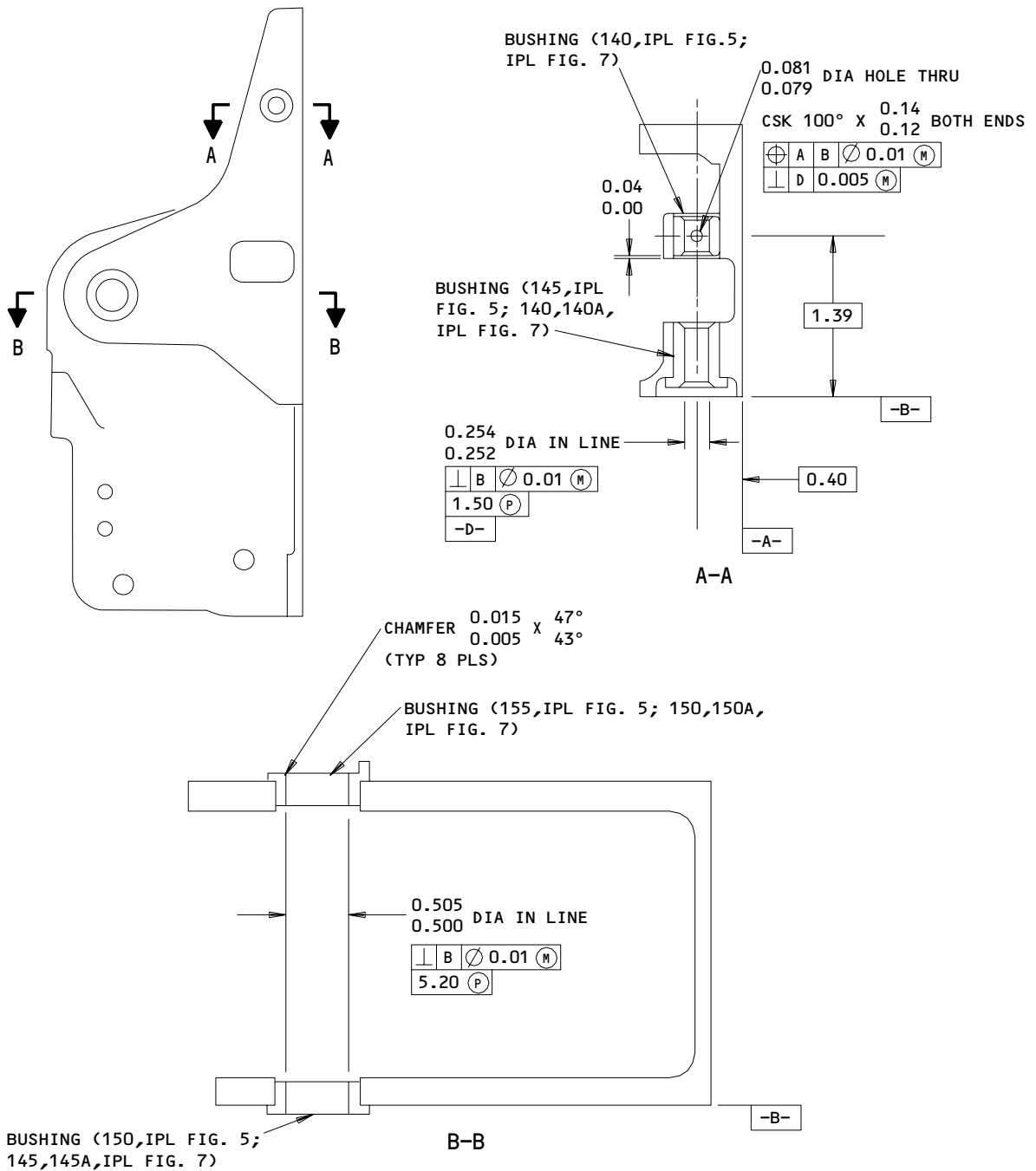
25-25-03

REPAIR 3-1

01

Page 601

Apr 10/84



REFINISH

BRACKET -- CHROMIC ACID ANODIZE AND APPLY 1 COAT OF
 BMS 10-11, TYPE 1 PRIMER (F-18.13) THEN APPLY
 PRIMER, BMS 10-83, TYPE 1 AND ENAMEL, BMS 10-83, TYPE 2 (F-22.05-8813)
 ALL OVER EXCEPT NO FINISH IN ALL HOLES

125/ ALL MACHINED SURFACES
 MATERIAL: AL ALLOY
 ALL DIMENSIONS ARE IN INCHES

414T2107-3 SHOWN
 Bushing Replacement and Parts Refinish
 Figure 601

25-25-03

REPAIR 3-1

Page 602

Apr 10/84

01

VELCRO TAPE – REPAIR 4-1

1. Velcro Tape Replacement

- A. Soak velcro tape which is bonded to metal panel with solvent, Series 88 (Ref 20-30-88).
- B. Remove velcro tape and scrape off residual adhesive.
- C. Bond replacement velcro tape to panel per 20-50-12 type 48 using adhesive EC 1458.

25-25-03

REPAIR 4-1

01.1

Page 601

Jul 01/98

MISCELLANEOUS PARTS REFINISH – REPAIR 5-1

1. Repair of parts listed in Fig. 601 consists of restoration of the original finish.

IPL FIG. & ITEM	MATERIAL	FINISH
<u>Fig. 1</u> Bumper strip assemblies (5,10) Bracket (120) Door assembly (125)	Al alloy	Apply BMS 10-83, type 1 primer and BMS 10-83, type 2 enamel (F-22.05-8813) on all surfaces not covered by tedlar. Chromic acid anodize and apply 1 coat of BMS 10-11, type 1 primer (F-18.13) all over. Apply BMS 10-83, type 1 primer and BMS 10-83, type 2 enamel (F-22.05-8813) all over. Apply 1 coat of BMS 10-11, type 1 primer (F-20.02) and apply primer, BMS 10-83, type 1 and enamel BMS 10-83, type 2 (F-22.05-8813) except omit primer and enamel on threads.
<u>Fig. 2</u> Bumper strip assemblies (5,10) Seat back assemblies (60) Bracket (110,125)	Al alloy	Apply BMS 10-83, type 1 primer and BMS 10-83, type 2 enamel (F-22.05-8813) on all surfaces not covered by tedlar. Apply 1 coat of BMS 10-11, type 1 primer (F-20.02) and apply BMS 10-83 type 1 primer and BMS 10-83, type 2 enamel (F-22.05-8813). Omit primer and enamel on velcro tape. Chromic acid anodize and apply 1 coat of BMS 10-11, type 1 primer (F-18.13) all over. Apply BMS 10-83, type 1 primer and BMS 10-83, type 2 enamel (F-22.05-8813) all over.

Refinish Details
 Figure 601 (Sheet 1)

25-25-03

REPAIR 5-1

01

Page 601

Apr 10/84

IPL FIG. & ITEM	MATERIAL	FINISH
<p><u>Fig. 2</u> (Cont.)</p> <p>Door assembly (130)</p> <p>Close out assembly (155)</p>		<p>Apply 1 coat of primer BMS 10-11, type 1 (F-20.02) and primer, BMS 10-83, type 1 and enamel, BMS 10-83, type 2 (F-22.05-8813) except omit primer and enamel on threads.</p> <p>Apply BMS 10-83, type 2 enamel (F-22.06-8813) on all surfaces not covered by tedlar.</p>
<p><u>Fig. 4</u></p> <p>Panel assemblies (5,35,45,70)</p>		<p>Apply 1 coat of BMS 10-11, type 1 primer (F-20.02) and apply BMS 10-83, type 1 primer and BMS 10-83, type 2 enamel (F-22.05-8813). Omit primer and enamel on nutplate threads and tedlar surfaces.</p>
<p><u>Fig. 5</u></p> <p>Pin (102)</p>	<p>15-5PH CRES, 180-200 KSI</p>	<p>Passivate (F-17.09).</p>
<p>Springs (115,120)</p>	<p>Chrome silicon wire</p>	<p>Apply 2 coats of BMS 10-11, type 1 primer (F-20.03) and apply BMS 10-83, type 1 primer and BMS 10-83 type 2 enamel (F-22.05-8813) all over.</p>

Refinish Details
 Figure 601 (Sheet 2)

25-25-03

REPAIR 5-1
 Page 602
 Apr 10/84

01

IPL FIG. & ITEM	MATERIAL	FINISH
<u>Fig. 5</u> (Cont.) Actuator (230)	Al alloy	Chromic acid anodize and apply 1 coat of BMS 10-11, type 1 (F-18.13) all over.
<u>Fig. 6</u> Bracket (45,50)	Al alloy	Chromic acid anodize and apply 1 coat of BMS 10-11, type 1 primer (F-18.13) all over. Apply BMS 10-83, type 1 primer and BMS 10-83, type 2 enamel (F-22.05-8813) all over.
Back pan assembly (70)		Apply BMS 10-83, type 1 primer and BMS 10-83, type 2 enamel (F-22.05-8813) all over except on velcro tapes and nylon parts.
Cam followers (105,110)	Al alloy	Chromic acid anodize and apply 1 coat of primer, BMS 10-11, type 1 (F-18.13) all over.
<u>Fig. 7</u> Pins (105)	15-5PH CRES, 180-200 ksi	Passivate (F-17.09).
Springs (115,120)	Chrome silicon wire	Apply 2 coats of BMS 10-11, type 1 primer (F-20.03) and apply BMS 10-83, type 1 primer and BMS 10-83, type 2 enamel (F-22.05-8813) all over.
Seat pan assembly (165)		Apply BMS 10-83, type 2 enamel (F-22.06-8813) on all exposed metal surfaces.

Refinish Details
 Figure 601 (Sheet 3)

25-25-03

REPAIR 5-1

01

Page 603

Apr 10/84

IPL FIG. & ITEM	MATERIAL	FINISH
<u>Fig. 7 (Cont.)</u> Actuator (285)	Al alloy	Chromic acid anodize and apply 1 coat of BMS 10-11, type 1 primer (F-18.13).
<u>Fig. 8</u> Brackets (45,50,80,85)	Al alloy	Chromic acid anodize and apply 1 coat of primer, BMS 10-11, type 1 (F-18.13) all over. Apply BMS 10-83, type 1 primer and BMS 10-83, type 2 enamel (F-22.05-8813) all over.
Back pan assembly (95)		Apply 1 coat of primer, BMS 10-11, type 1 (F-20.02) and apply BMS 10-83, type 2 enamel (F-22.06-8813) except omit primer and enamel on nylon parts and velcro tapes.
Cam followers (170,175)	Al alloy	Chromic acid anodize and apply 1 coat of primer, BMS 10-11, type 1 (F-18.13) all over.

Refinish Details
 Figure 601 (Sheet 4)

25-25-03

REPAIR 5-1

Page 604

Apr 10/84

01

ASSEMBLY

1. Materials

NOTE: Equivalent substitutes may be used.

- A. Oil -- MIL-L-7870 (Ref 20-60-03)
- B. Grease -- MIL-G-23827 (Ref 20-60-03)

2. Assembly

- A. Assemble attendant seat components using standard industry practices and the following special instructions.
- B. Access door assembly (IPL Fig. 3):
 - (1) Lubricate hinges (30) with oil per 20-50-07.
- C. Access door assembly (IPL Fig. 4):
 - (1) Lubricate hinge (60) with oil per 20-50-07.
- D. Seat base assembly (IPL Fig. 5):
 - (1) Apply a light coat of grease to pins (65, 102) and slot in cam assemblies (70, 75) before assembly. Wipe off excess grease after assembly.
 - (2) Leave one end of springs (115, 120) free to facilitate shipping and installation.
- E. Seat back assembly (IPL Fig. 6):
 - (1) Apply a light coat of grease to pins (10) and cam followers (105, 110) before assembly. Wipe off excess grease from cam followers after installing sleeves (95).
- F. Seat base assembly (IPL Fig. 7):
 - (1) Apply a light coat of grease to pins (65, 105) and slot in cam assemblies (70, 75) before assembly. Wipe off excess grease after assembly.
 - (2) Leave one end of springs (115, 120) free to facilitate shipping and installation.

25-25-03

01 ASSEMBLY
Page 701
Apr 10/84

G. Seat back assembly (IPL Fig. 8):

(1) Apply a light coat of grease to pins (10) before assembly.

3. Use standard industry practices to store the attendant seat components.

25-25-03

ASSEMBLY
Page 702
Apr 10/84

01

ILLUSTRATED PARTS LIST

1. This section lists and illustrates replaceable or repairable component parts. The Illustrated Parts Catalog contains a complete explanation of the Boeing part numbering system.
2. Indentures show parts relationships as follows:

Assembly

Detail Parts for Assembly

Subassembly

Attaching Parts for Subassembly

Detail Parts for Subassembly

Detail Installation Parts (Included only if installation parts may be returned to shop as part of assembly)

3. One use code letter (A, B, C, etc.) is assigned in the EFF CODE column for each variation of top assembly. All listed parts are used on all top assemblies except when limitations are shown by use code letter opposite individual part entries.
4. Letter suffixes (alpha-variants) are added to item numbers for optional parts, Service Bulletin modification parts, configuration differences (except left- and right-hand parts), product improvement parts, and parts added between two sequential item numbers. The alpha-variant is not shown on illustrations when appearance and location of all variants of the part is the same.
5. Service Bulletin modifications are shown by the notations PRE SB XXXX and POST SB XXXX.
 - A. When a new top assembly part number is assigned by Service Bulletin, the notations appear at the top assembly level only. The configuration differences at detail part level are then shown by use code letter.
 - B. When the top assembly part number is not changed by the Service Bulletin, the notations appear at the detail part level.

6. Parts Interchangeability

Optional
(OPT)

The parts are optional to and interchangeable with other parts having the same item number.

Supersedes, Superseded By
(SUPSDS, SUPSD BY)

The part supersedes and is not interchangeable with the original part.

Replaces, Replaced By
(REPLS, REPLD BY)

The part replaces and is interchangeable with, or is an alternate to, the original part.

25-25-03

VENDORS

- V31845 SEALTH AERO-MARINE CO.,
641-43 WEST EWING STREET
SEATTLE, WASHINGTON 98119
- V45402 PACIFIC SCIENTIFIC CO., KIN-TECK DIV.
1346 SOUTH STATE COLLEGE BLVD.
ANEHEIM, CALIFORNIA 92803
- V84256 AVIBANK MANUFACTURING CO.
210 SOUTH VICTORY BLVD., P.O. BOX 391
BURBANK, CALIFORNIA 91503

25-25-03

ILLUSTRATED PARTS LIST
01 Page 1002
Apr 10/84

PART NUMBER	AIRLINE PART NO.	FIG.	ITEM	TTL REQ
AN415-5		6	5	2
		8	5	4
AN960-416		5	10	2
		7	45	4
AN960KD10L		2	140	2
AN960KD416L		2	150	2
AN960PD8L		5	45	4
		7	10	8
AS246-1		5	100	2
AS246-2		5	110	2
BACB28X8M050		5	200	1
		7	255	1
BACB28Y4C022		5	20	2
		7	50	4
BACB30NF4-8		5	25	2
		7	55	4
BACG20AF4B1		1	145	2
		2	190	2
BACG20AF4B2		8	90	4
BACG20C10		8	90A	4
BACN10JC08		5	40	4
		7	5	8
BACN10JC3		3	10	4
BACN10JC4		5	5	2
		7	35	4
BACN10JR08FR		2	165	4
BACR15BA4AD		5	220	1
		6	40	2
		7	275	1
		8	40	2
		8	70	2
BACR15BA5AD		6	130	4
		8	115	8
BACR15BA6AD		5	205	2
		6	100	4
		7	260	2
		8	165	8

25-25-03

PART NUMBER	AIRLINE PART NO.	FIG.	ITEM	TTL REQ
BACR15BB4AD		1	75B	4
		4	55	13
		5	182	2
		6	35	2
		7	240	2
		8	35	2
		8	65	2
		2	160	8
BACR15CE3D		3	25	4
BACR15CE4D		4	10	13
		4	20	13
		4	40	8
		4	50	13
		6	65	3
BACR15DA4-2		1	75A	4
BACR15FR4E1		2	70A	4
		6	115	6
BACR15FR4E2		8	180	6
BACR15FR4E5		6	90	2
		8	155	4
BACS18C10-4		5	15	2
		7	40	4
		1	105	1
BACS21Y5FR		2	95	1
		5	30	2
		6	25	1
		7	30	2
		8	25	1
		3	15	4
		1	110	1
		2	100	1
BACW10BP3DP BACW10X4		5	35	2
		6	30	1
		7	25	2
		8	30	1
		5	60	2
		7	60	4
		4	60	1
		6	10	2
MS16562-16		8	10	4
		5	60	2
MS20257P4-1300		7	60	4
		4	60	1
MS203920-3C27		6	10	2
		8	10	4

25-25-03

 ILLUSTRATED PARTS LIST
 01 Page 1004
 Apr 10/84

PART NUMBER	AIRLINE PART NO.	FIG.	ITEM	TTL REQ
MS27980-7B		6	60	3
MS27980-7C		6	60A	3
MS3217-1050		5	112	2
		7	100	4
NAS1398MW4-1		1	75	4
		2	70	4
NAS1515H8H		5	105	2
NAS1738E4-2		7	180	2
		8	130	25
		8	140	3
NAS1738E5-4		7	215	2
NAS1738E5-6		7	205	2
NAS1738E5-7		7	200	4
NAS1739E4-2		7	190	10
NAS42DD4-28		5	225	1
		7	280	1
NAS514P832-6		5	50	4
		7	15	8
NAS537B4P36		5	140	1
		7	135	1
NAS538B4P018		5	80	2
		7	80	2
NAS538B4P50		5	145	1
		7	140	1
NAS538B8P017		7	150	1
NAS538B8P022		5	150	1
		7	145A	1
NAS602-10		2	135	2
NAS602-9		2	145	2
NAS608-7P		3	20	4
NO ASSIGNED P/N		1	1	RF
		1	95	1
		2	1	RF
		2	85	1
		2	170	1
		3	35	1
		3	40	1
		4	30	1
		4	65	1
		5	250	1
		6	160	1
		7	305	1
		8	215	2

25-25-03

PART NUMBER	AIRLINE PART NO.	FIG.	ITEM	TTL REQ
SAM224-1		3	5	1
		4	15	1
1107133		1	45A	1
		2	45	1
1107184		1	45B	1
1107500		1	40	1
		2	40	1
1108037		1	45	1
414T2010-22		1	35	1
414T2010-23		1	50	2
414T2010-24		1	35A	1
		2	35	2
414T2010-25		1	35B	1
414T2022-1		5	102	2
		7	105	4
414T2023-2		8	135	1
414T2023-3		8	145	1
414T2023-4		7	220	1
414T2023-5		7	195	1
414T2023-6		7	185	1
414T2023-8		8	150	1
414T2024-1		7	165	1
414T2024-2		7	175	2
414T2024-3		7	170	1
414T2025-1		2	185	1
		7	1	RF
414T2028-1		8	95	1
414T2028-2		8	100	1
414T2028-3		8	105	1
414T2028-4		8	110	1
414T2030-1		2	205	1
		8	1	RF
414T2035-8		2	60	1
414T2040-3		2	155	1
414T2044-1		2	175	1
414T2044-2		2	195	1
414T2044-3		2	50	1
414T2044-4		2	15	1
414T2044-5		2	25	1

25-25-03

 ILLUSTRATED PARTS LIST
 01 Page 1006
 Apr 10/84

PART NUMBER	AIRLINE PART NO.	FIG.	ITEM	TTL REQ
414T2045-1		2	180	1
414T2045-4		2	200	1
414T2045-5		2	55	1
414T2045-6		2	20	1
414T2045-7		2	30	1
414T2050-11		6	20	1
		6	75	1
		8	20	1
414T2050-12		6	80	1
414T2050-14		1	160	1
		6	1	RF
414T2050-15		6	85	1
414T2050-17		1	150A	1
414T2050-18		1	160A	1
		6	1A	RF
414T2050-2		6	15	2
		8	15	2
414T2050-3		6	70	1
414T2050-9		1	150	1
414T2051-7		6	145	1
		8	200	1
414T2051-8		6	140	1
		8	195	1
414T2052-1		6	50	1
		8	50	1
		8	85	1
414T2052-3		8	55	2
414T2052-4		8	60	1
414T2053-1		6	105	1
		8	170	2
414T2053-2		6	110	1
		8	175	2
414T2054-1		6	150	1
		8	205	2
414T2054-2		6	155	1
		8	210	2
414T2055-12		1	70	2
		2	65	2

25-25-03

PART NUMBER	AIRLINE PART NO.	FIG.	ITEM	TTL REQ
414T2055-3		6	135	2
		8	120	4
414T2055-5		6	95	2
		8	160	4
414T2055-7		6	120	1
		8	185	1
414T2055-8		6	125	1
		8	190	1
414T2100-2		1	130	1
414T2100-7		1	140	1
		5	1	RF
414T2100-8		1	130A	1
414T2100-9		1	140A	1
		5	1A	RF
414T2101-1		5	70	1
		7	70	2
414T2101-10		5	240	1
		7	295	1
414T2101-14		5	125	2
		7	110	4
414T2101-15		5	85	1
		7	85	1
414T2101-18		5	155	1
		7	145	1
414T2101-19		5	65	2
		7	65	4
414T2101-2		5	75	1
		7	75	2
414T2101-20		1	142	2
414T2101-21		5	55	2
		7	20	4
414T2101-22		7	150A	1
414T2101-3		5	215	1
		7	270	1
414T2101-5		5	230	1
		7	285	1
414T2101-6		5	210	1
		7	265	1
414T2101-7		5	185	1
		7	245	1

25-25-03

 ILLUSTRATED PARTS LIST
 01.1 Page 1008
 Nov 01/01

PART NUMBER	AIRLINE PART NO.	FIG.	ITEM	TTL REQ
414T2101-8		5	195	1
		7	250	1
414T2101-9		5	235	1
		7	290	1
414T2102-1		5	90	1
		7	90	1
414T2102-2		5	95	1
		7	95	1
414T2103-3		5	160	1
		7	155	1
414T2103-4		5	165	1
		7	160	1
414T2104-5		5	245	1
		7	300	1
414T2105-1		5	115	1
		7	115	2
414T2105-2		5	120	1
		7	120	2
414T2106-2		5	175	1
		7	230	1
414T2106-4		5	180	1
		7	235	1
414T2106-5		5	170	1
		7	225	2
414T2107-3		5	130	1
		7	125	1
414T2107-4		5	135	1
		7	130	1
414T2107-5		7	125A	1
414T2107-6		7	130A	1
414T2150-5		1	5	1
		2	5	1
414T2150-6		1	10	1
		2	10	1
414T2152-1		1	120	1
		2	125	1
414T2153-3		1	100	2
		2	90	2
414T2152-4		1	115	1
		2	120	1

25-25-03

PART NUMBER	AIRLINE PART NO.	FIG.	ITEM	TTL REQ
414T2202-2		3	30	1
414T2202-3		1	125	1
		2	130	2
		3	1	RF
414T2204-1		1	125A	1
		4	1	RF
414T2204-2		4	70	1
414T2204-3		4	45	1
414T2204-4		4	5	1
414T2204-5		4	35	2
414T2205-8		4	25	1
414T2251		1	15	1
		1	20	1
414T2251-3		1	135	1
414T2251-61		1	155A	1
414T2251-62		6	55	1
		8	125	2
414T2251-9		1	60	1
		1	155	1
414T2304-11		1	30	1
414T2304-6		1	25	1
414T2350-10		1	65	1
414T2350-11		1	65A	1
414T2350-12		1	55A	1
414T2350-6		1	55	1
414T2351-4		6	45	1
		8	45	1
		8	80	1
414T2351-6		1	85	1
414T2351-7		1	90	1
414T2351-8		1	85A	1
		1	90A	1
		2	75	2
414T2351-9		1	80	2
		2	80	2

25-25-03

 ILLUSTRATED PARTS LIST
 01 Page 1010
 Apr 10/84

FIG. & ITEM	PART NO.	AIRLINE PART NUMBER	NOMENCLATURE 1234567	EFF CODE	QTY PER ASSY
01- -1	NO ASSIGNED P/N		ATTENDANT SEAT INSTL COMPONENTS (SINGLE SEAT)		RF
5	414T2150-5		.STRIP ASSY-BUMPER		1
10	414T2150-6		.STRIP ASSY-BUMPER		1
15	414T2251-*[1]		.FABRIC ASSY-HEADREST		1
20	414T2251-*[1]		.FOAM ASSY-HEADREST		1
25	414T2304-6		.FABRIC ASSY-HEADREST SIDE RAIL		1
30	414T2304-11		.SIDE RAIL ASSY-HEADREST		1
35	414T2010-22		.RESTRAINT SYSTEM ASSY		1
-35A	414T2010-24		.RESTRAINT SYSTEM ASSY		1
-35B	414T2010-25		.RESTRAINT SYSTEM ASSY		1
40	1107500		..GUIDE ASSY-STRAP (V45402)		1
45	1108037		..WEBBING ASSY-(V45402) (USED ON ITEM 35)		1
45A	1107133		..WEBBING ASSY-(V45402) (USED ON ITEM 35A)		1
45B	1107184		..WEBBING ASSY-(V45402) (USED ON ITEM 35B)		1
50	414T2010-23		..LABEL-CAUTION (USED ON ITEM 35)		2
55	414T2350-6		.COVER ASSY-SUPPORT PANEL (PRE SB 25-23)		1
-55A	414T2350-12		.COVER ASSY-SUPPORT PANEL (POST SB 25-23)		1
60	414T2251-9		.FOAM-SUPPORT PANEL		1
-65	414T2350-10		.PANEL ASSY-BACKREST SUPPORT (PRE SB 25-23)		1
65A	414T2350-11		.PANEL ASSY-BACKREST SUPPORT (POST SB 25-23)		1
70	414T2055-12		..PIN-LOCATOR		2
-75	NAS1398MW4-1		..RIVET-(USED ON ITEM 65) (OPT ITEM 75A)		4
-75A	BACR15FR4E1		..RIVET-(USED ON ITEM 65) (OPT ITEM 75)		4
75B	BACR15BB4AD		..RIVET-(USED ON ITEM 65A)		4
80	414T2351-9		..BLOCK-(USED ON ITEM 65A)		2
-85	414T2351-6		..CLIP-(USED ON ITEM 65)		1
85A	414T2351-8		..CLIP-(USED ON ITEM 65A)		1
-90	414T2351-7		..CLIP-(USED ON ITEM 65)		1
-90A	414T2351-8		..CLIP-(USED ON ITEM 65A)		1

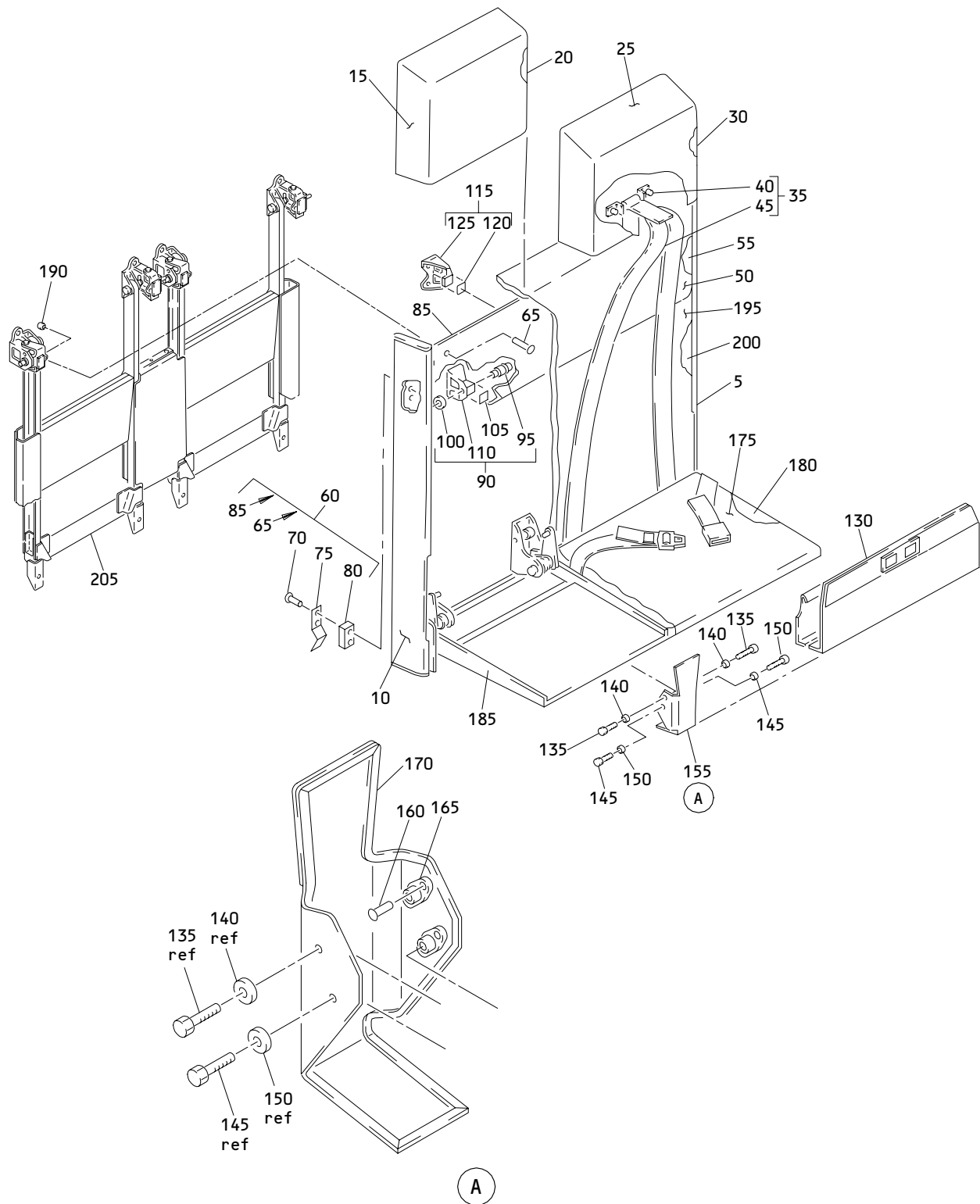
25-25-03

FIG. & ITEM	PART NO.	AIRLINE PART NUMBER	NOMENCLATURE 1234567	EFF CODE	QTY PER ASSY
01-95	NO ASSIGNED P/N		..PANEL ASSY-BONDED		1
100	414T2152-3		.BRACKET ASSY-BUMPER STRIP MNTG		2
105	BACS21Y5FR		..STUD ASSY		1
110	BACW10X4		..WASHER		1
115	414T2152-4		..TAPE-VELCRO (PILE)		1
120	414T2152-1		..BRACKET		1
125	414T2202-3		.DOOR ASSY-ACCESS (FOR DETAILS SEE FIG. 3)		1
-125A	414T2204-1		.DOOR ASSY-ACCESS (FOR DETAILS SEE FIG. 4)		1
130	414T2100-2		.COVER ASSY-SEAT BASE (PRE SB 25-23)		1
-130A	414T2100-8		.COVER ASSY-SEAT BASE (POST SB 25-23)		1
135	414T2251-3		.FOAM		1
140	414T2100-7		.BASE ASSY-SEAT (FOR DETAILS SEE FIG. 5)		1
-140A	414T2100-9		.BASE ASSY-SEAT (FOR DETAILS SEE FIG. 5)		1
142	414T2101-20		.SPRING		2
145	BACG20AF4B1		.GROMMET		2
150	414T2050-9		.COVER ASSY-SEAT BACK		1
-150A	414T2050-17		.COVER ASSY-SEAT BACK		1
155	414T2251-9		.FOAM-SEAT BACK		1
-155A	414T2251-61		.FOAM-SEAT BACK		1
160	414T2050-14		.BACK ASSY-SEAT (FOR DETAILS SEE FIG. 6) (PRE SB 25-23)		1
-160A	414T2050-18		.BACK ASSY-SEAT (FOR DETAILS SEE FIG. 6) (POST SB 25-23)		1

*[1] REFER TO IPC FOR DASH NUMBER APPLICABILITY

25-25-03

 ILLUSTRATED PARTS LIST
 01.1 Page 1014
 Oct 01/92



Attendant Seat Installation Components (Double Seat)
 Figure 2

25-25-03

ILLUSTRATED PARTS LIST
 01 Page 1016
 Apr 10/84

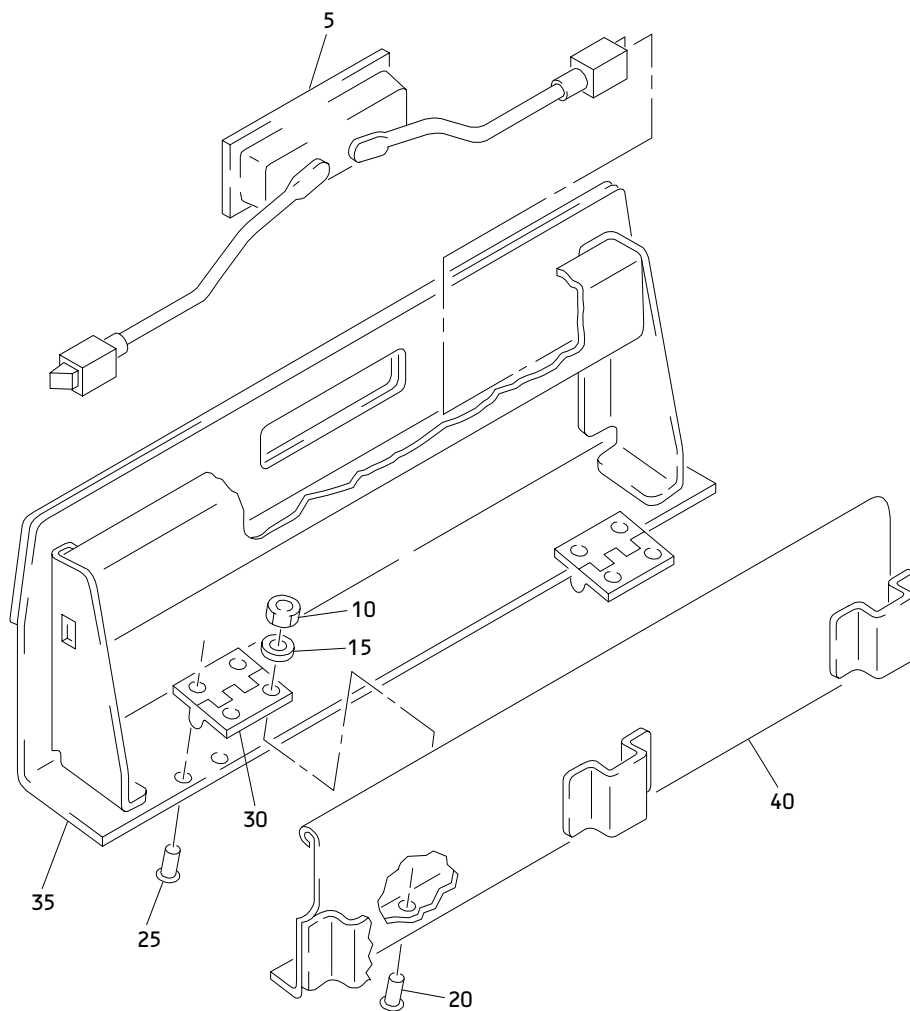
FIG. & ITEM	PART NO.	AIRLINE PART NUMBER	NOMENCLATURE 1234567	EFF CODE	QTY PER ASSY
02- -1	NO ASSIGNED P/N		ATTENDANT SEAT INSTL COMPONENTS (DOUBLE SEAT)		RF
5	414T2150-5		.STRIP ASSY-BUMPER		1
10	414T2150-6		.STRIP ASSY-BUMPER		1
15	414T2044-4		.COVER ASSY-HEADREST		1
20	414T2045-6		.CUSHION ASSY-HEADREST		1
25	414T2044-5		.COVER ASSY-HEADREST		1
30	414T2045-7		.CUSHION ASSY-HEADREST		1
35	414T2010-24		.RESTRAINT SYSTEM ASSY		2
40	1107500		..GUIDE ASSY-STRAP (V45402)		1
45	1107133		..WEBBING ASSY-(V45402)		1
50	414T2044-3		.COVER ASSY-SEAT BACK, UPR		1
55	414T2045-5		.CUSHION-SEAT BACK, UPR		1
60	414T2035-8		.BACK ASSY-SEAT, UPR		1
65	414T2055-12		..PIN		2
70	NAS1398MW4-1		..RIVET-(OPT ITEM 70A)		4
-70A	BACR15FR4E1		..RIVET-(OPT ITEM 70)		4
75	414T2351-8		..CLIP		2
80	414T2351-9		..BLOCK		2
85	NO ASSIGNED P/N		..PANEL ASSY-BONDED		1
90	414T2152-3		.BRACKET ASSY-BUMPER STRIP MNTG		2
95	BACS21Y5FR		..STUD ASSY		1
100	BACW10X4		..WASHER		1
105	414T2152-4		..TAPE-VELCRO (PILE)		1
110	414T2152-1		..BRACKET		1
115	414T2152-5		.BRACKET ASSY		2
120	414T2152-4		..TAPE-VELCRO (PILE)		1
125	414T2152-1		..BRACKET		1
130	414T2202-3		.DOOR ASSY-ACCESS (FOR DETAILS SEE FIG. 3)		2
135	NAS602-10		.BOLT		2
140	AN960KD10L		.WASHER		2
145	NAS602-9		.BOLT		2
150	AN960KD416L		.WASHER		2
155	414T2040-3		.CLOSE OUT ASSY-ACCESS DOOR		1
160	BACR19CE3D		..RIVET		8

25-25-03

FIG. & ITEM	PART NO.	AIRLINE PART NUMBER	NOMENCLATURE 1234567	EFF CODE	QTY PER ASSY
02-					
165	BACN10JR08FR		..NUTPLATE		4
170	NO ASSIGNED P/N		..BRACKET (BONDED)		1
175	414T2044-1		.COVER ASSY-SEAT BASE		1
180	414T2045-1		.CUSHION-SEAT BASE		1
185	414T2025-1		.BASE ASSY-SEAT (FOR DETAILS SEE FIG. 7)		1
190	BACG20AF4B1		.GROMMET		2
195	414T2044-2		.COVER ASSY-SEAT BACK, LWR		1
200	414T2045-4		.CUSHION-SEAT BACK, LWR		1
205	414T2030-1		.BACK ASSY-SEAT, LWR (FOR DETAILS SEE FIG. 8)		1

25-25-03

ILLUSTRATED PARTS LIST
 01 Page 1018
 Apr 10/84



Access Door Assembly
 Figure 3

25-25-03

ILLUSTRATED PARTS LIST
 01 Page 1020
 Apr 10/84

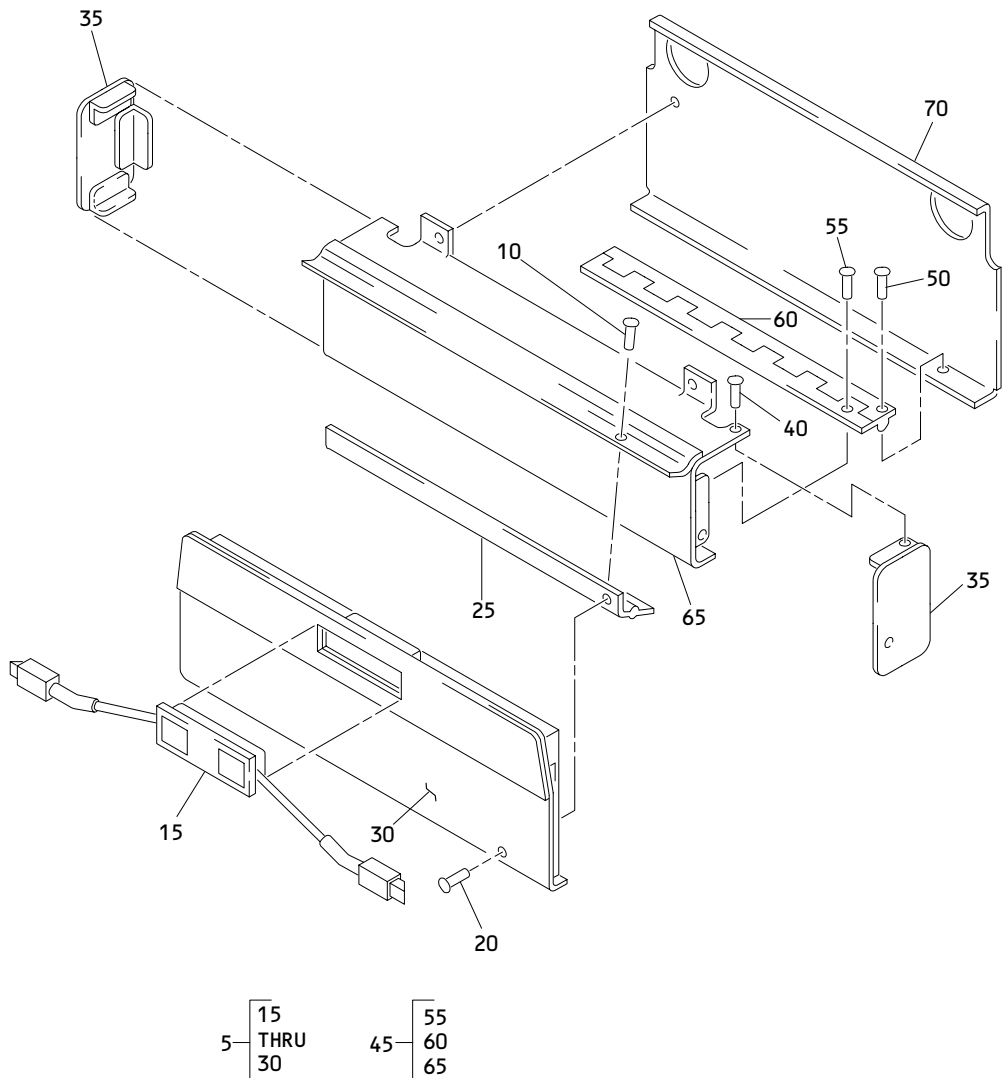
ATTENDANT SEAT
 INSTL COMPONENTS
 (NO ASSIGNED P/N)

 **BOEING**
 COMPONENT
 MAINTENANCE MANUAL

FIG. & ITEM	PART NO.	AIRLINE PART NUMBER	NOMENCLATURE 1234567	EFF CODE	QTY PER ASSY
03-					
-1	414T2202-3		DOOR ASSY-ACCESS		RF
5	SAM224-1		.LATCH ASSY-(V31845)		1
10	BACN10JC3		.NUT		4
15	BACW10BP3DP		.WASHER		4
20	NAS603-7P		.BOLT		4
25	BACR15CE4D		.RIVET		4
30	414T2202-2		.HINGE		2
35	NO ASSIGNED P/N		.FRONT PANEL		1
40	NO ASSIGNED P/N		.REAR PANEL		1

25-25-03

ILLUSTRATED PARTS LIST
 01 Page 1021
 Apr 10/84



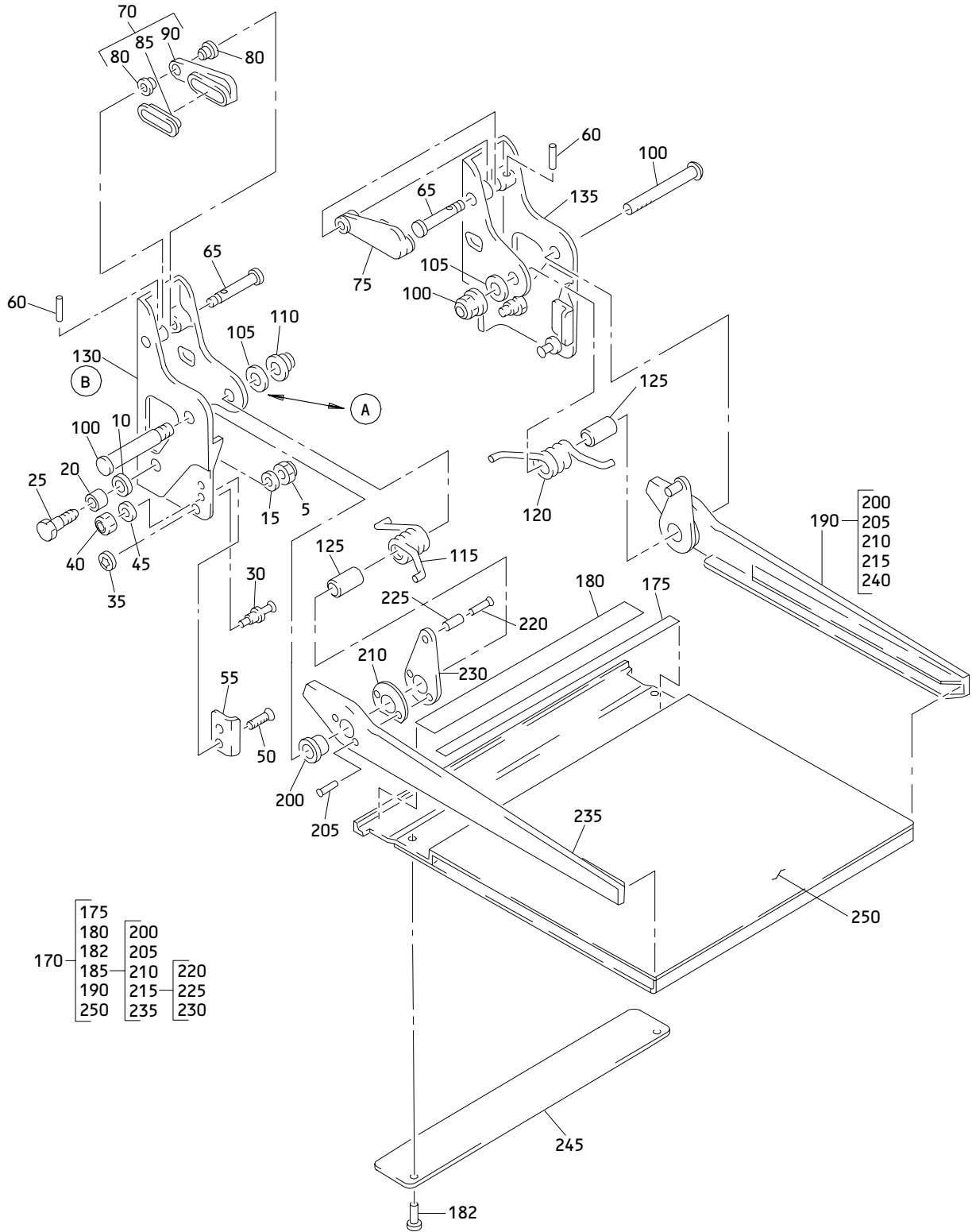
Panel Access Door Assembly
 Figure 4

25-25-03

ILLUSTRATED PARTS LIST
 01 Page 1022
 Apr 10/84

FIG. & ITEM	PART NO.	AIRLINE PART NUMBER	NOMENCLATURE 1234567	EFF CODE	QTY PER ASSY
04-					
-1	414T2204-1		DOOR ASSY-PANEL ACCESS		RF
5	414T2204-4		.PANEL ASSY-DOOR ATTACHING PARTS		1
10	BACR15CE4D		.RIVET -----*-----		13
15	SAM224-1		..LATCH ASSY-(V31845)		1
20	BACR15CE4D		..RIVET		13
25	414T2205-8		..HINGE		1
30	NO ASSIGNED P/N		..PANEL ASSY		1
35	414T2204-5		.PANEL ASSY-END ATTACHING PARTS		2
40	BACR15CE4D		.RIVET -----*-----		8
45	414T2204-3		.PANEL ASSY-DOOR ATTACHING PARTS		1
50	BACR15CE4D		.RIVET -----*-----		13
55	BACR15BB4AD		..RIVET		13
60	MS20257P4-1300		..HINGE		1
65	NO ASSIGNED P/N		..PANEL ASSY		1
70	414T2204-2		.FRAME ASSY-BACK		1

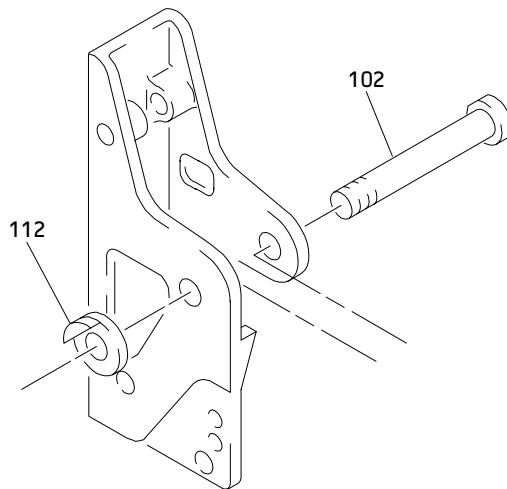
25-25-03



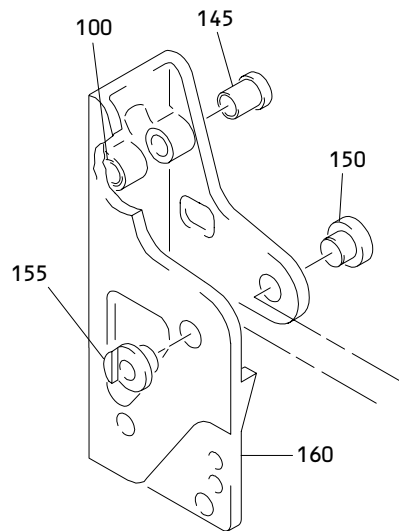
Seat Base Assembly
 Figure 5 (Sheet 1)

25-25-03

ILLUSTRATED PARTS LIST
 01 Page 1025
 Apr 10/84



A



B

Seat Base Assembly
Figure 5 (Sheet 2)

25-25-03

ILLUSTRATED PARTS LIST
01 Page 1026
Apr 10/84

FIG. & ITEM	PART NO.	AIRLINE PART NUMBER	NOMENCLATURE 1234567	EFF CODE	QTY PER ASSY
05-					
-1	414T2100-7		BASE ASSY-SEAT	A	RF
-1A	414T2100-9		BASE ASSY-SEAT	B	RF
5	BACN10JC4		.NUT		2
10	AN960-416		.WASHER		2
15	BACS18C10-4		.BUSHING-FLANGED		2
20	BACB28Y4C022		.BUSHING		2
25	BACB30NF4-8		.BOLT		2
30	BACS21Y5FR		.STUD ASSY		2
35	BACW10X4		.WASHER		2
40	BACN10JC08		.NUT		4
45	AN960PD8L		.WASHER		4
50	NAS514P832-6		.SCREW		4
55	414T2101-21		.PLATE-STRIKE		2
60	MS16562-16		.PIN		2
65	414T2101-19		.PIN		2
70	414T2101-1		.CAM ASSY		1
75	414T2101-2		.CAM ASSY		1
80	NAS538B4P018		..BUSHING-FLANGED		2
85	414T2101-15		..INSERT-CAM		1
90	414T2102-1		..CAM-(USED ON ITEM 70)		1
95	414T2102-2		..CAM-(USED ON ITEM 75)		1
100	AS246-1		.BOLT-(V84256) (USED WITH ITEMS 105,110)	A	2
102	414T2022-1		.PIN-PIVOT (USED WITH ITEM 112)*[1]	B	2
105	NAS1515H8H		.WASHER-(USED WITH ITEMS (100,110)	A	2
110	AS246-2		.NUT-(V84256) (USED WITH ITEMS 100,105)	A	2
112	MS3217-1050		.CLIP-(USED WITH ITEM 102) *[1]	B	2
115	414T2105-1		.SPRING-RETURN		1
120	414T2105-2		.SPRING-RETURN		1
125	414T2101-14		.SLEEVE-SPRING		2
130	414T2107-3		.BRACKET ASSY-PIVOT		1
135	414T2107-4		.BRACKET ASSY-PIVOT		1
140	NAS537B4P36		..BUSHING		1
145	NAS537B4P50		..BUSHING		1

25-25-03



BOEING
 COMPONENT
 MAINTENANCE MANUAL

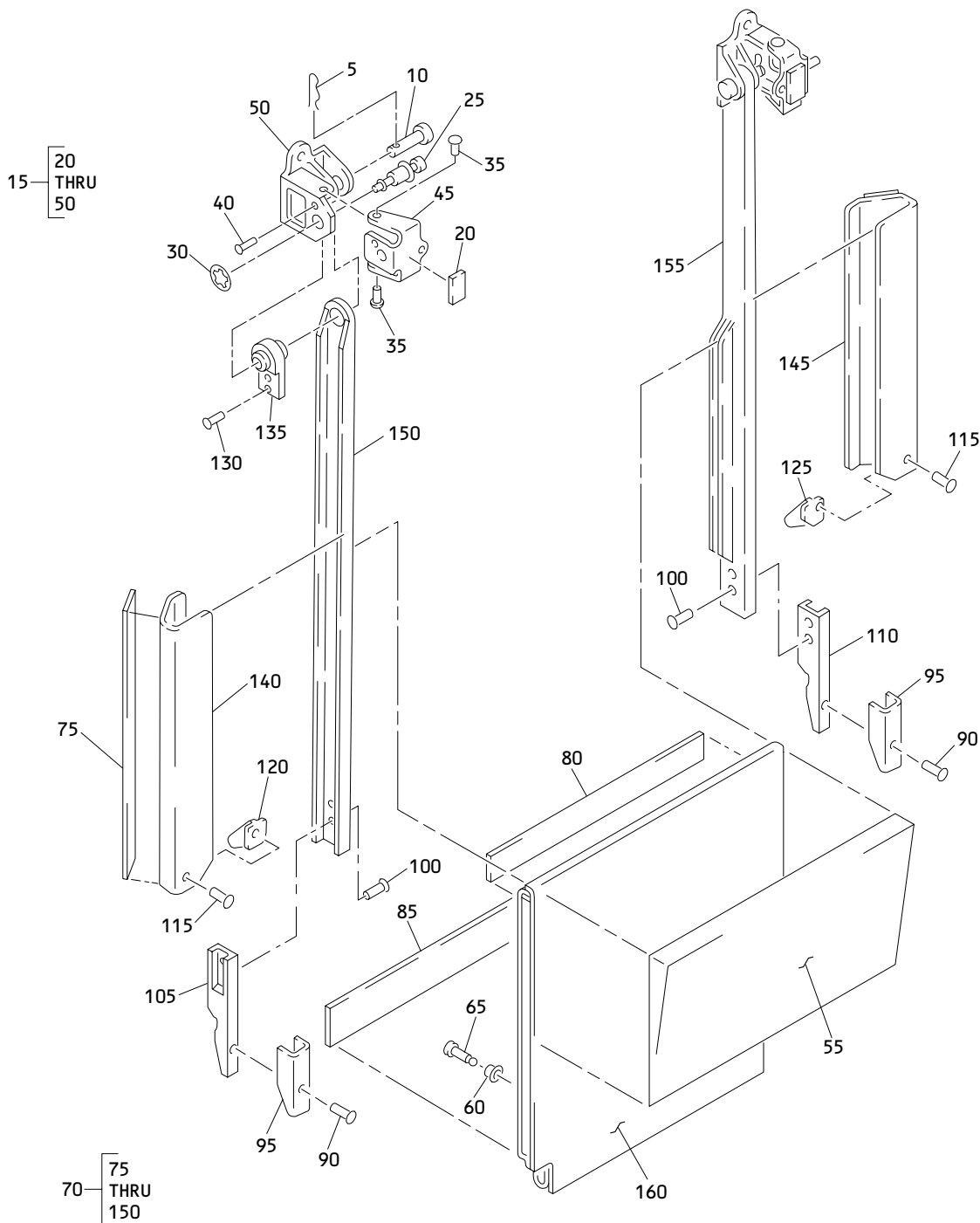
ATTENDANT SEAT
 INSTL COMPONENTS
 (NO ASSIGNED P/N)

FIG. & ITEM	PART NO.	AIRLINE PART NUMBER	NOMENCLATURE 1234567	EFF CODE	QTY PER ASSY
05-					
150	NAS538B8P017		..BUSHING		1
155	414T2101-18		..BUSHING		1
160	414T2103-3		..BRACKET-(USED ON ITEM 130)		1
165	414T2103-4		..BRACKET-(USED ON ITEM 135)		1
170	414T2106-5		.SEAT PAN ASSY		1
175	414T2106-2		..TAPE-VELCRO (HOOK)		1
180	414T2106-4		..TAPE-VELCRO (HOOK)		1
182	BACR15BB4AD		..RIVET		2
185	414T2101-7		..RAIL ASSY-SIDE		1
190	414T2101-8		..RAIL ASSY-SIDE		1
200	BACB28X8M050		...BUSHING		1
205	BACR15BA6AD		...RIVET		2
210	414T2101-6		...SHIM		1
215	414T2101-3		...ACTUATOR ASSY-CAM		1
220	BACR15BA4AD	RIVET		1
225	NAS42DD4-28	SPACER		1
230	414T2101-5	ACTUATOR		1
235	414T2101-9		...ARM-SUPPORT (USED ON ITEM 185)		1
240	414T2101-10		...ARM-SUPPORT (USED ON ITEM 190)		1
245	414T2104-5		..DOUBLER		1
250	NO ASSIGNED P/N		..SEAT PAN		1

*[1] ITEM 100 USED WITH ITEMS 105, 110 OPT TO ITEM 102 USED WITH ITEM 112 ON 414T2100-9

25-25-03

ILLUSTRATED PARTS LIST
 01 Page 1028
 Apr 10/84



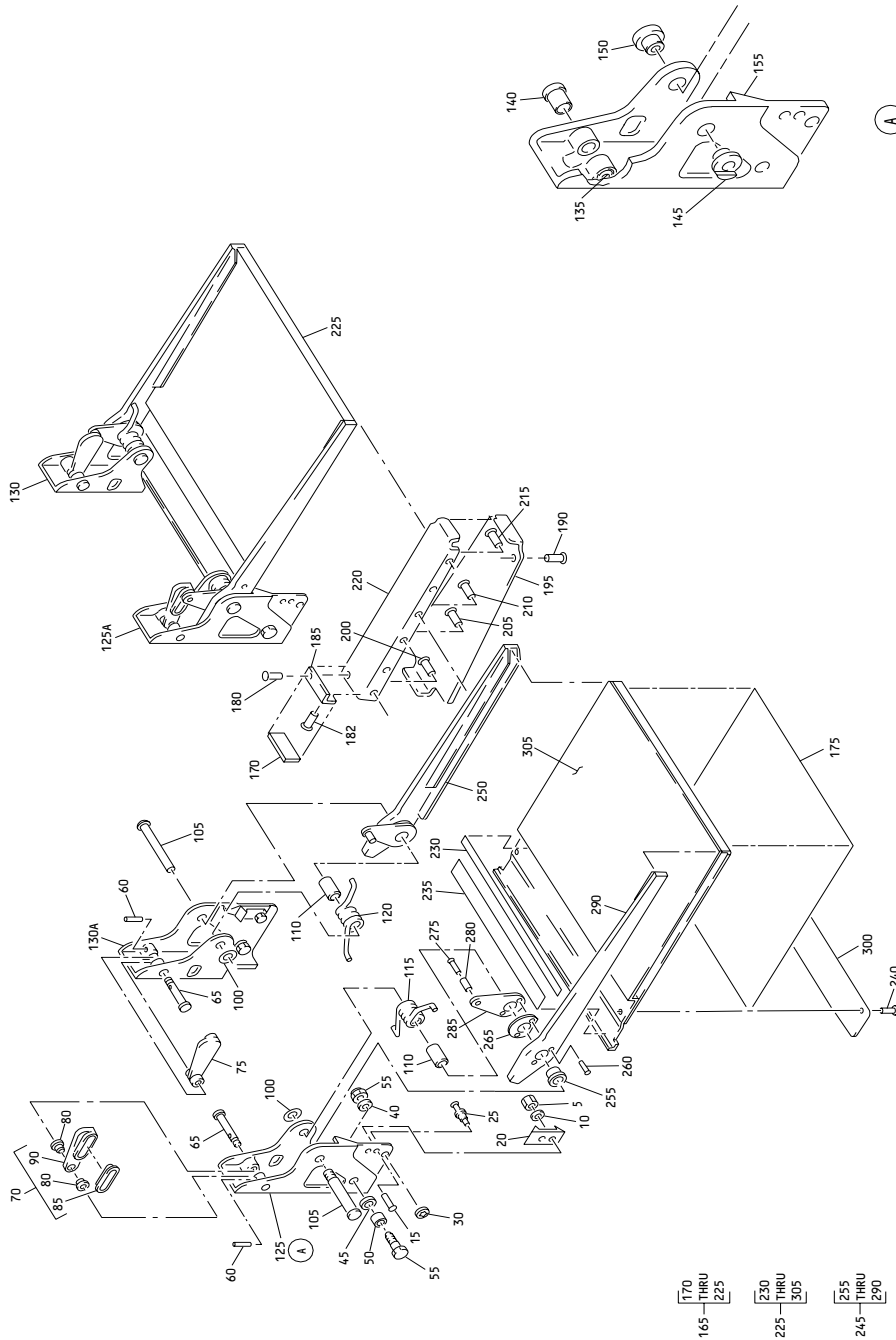
**Seat Back Assembly
 Figure 6**

25-25-03

**ILLUSTRATED PARTS LIST
 01 Page 1030
 Apr 10/84**

FIG. & ITEM	PART NO.	AIRLINE PART NUMBER	NOMENCLATURE 1234567	EFF CODE	QTY PER ASSY
06- -1	414T2050-14		BACK ASSY-SEAT (PRE SB 25-23)	A	RF
-1A	414T2050-18		BACK ASSY-SEAT (POST SB 25-23)	B	RF
5	AN415-5		.PIN-HITCH		2
10	MS20392-3C27		.PIN		2
15	414T2050-2		.BRACKET ASSY-PIVOT		2
20	414T2050-11		..TAPE-VELCRO (PILE)		1
25	BACS21Y5FR		..STUD ASSY		1
30	BACW10X4		..WASHER		1
35	BACR15BB4AD		..RIVET		2
40	BACR15BA4AD		..RIVET		2
45	414T2351-4		..BRACKET		1
50	414T2052-1		..BRACKET-PIVOT		1
55	414T2251-62		.FOAM-IMPACT		1
60	MS27980-7B		.STUD-SNAP (OPT ITEM 60A)	B	3
-60A	MS27980-7C		.STUD-SNAP (OPT ITEM 60)	B	3
65	BACR15DA4-2		.RIVET	B	3
70	414T2050-3		.PAN ASSY-BACK		1
75	414T2050-11		..TAPE-VELCRO (PILE)		1
80	414T2050-12		..TAPE-VELCRO (HOOK)		1
85	414T2050-15		..TAPE-VELCRO (HOOK)		1
90	BACR15FR4E5		...RIVET		2
95	414T2055-5		..SLEEVE-CAM FOLLOWER		2
100	BACR15BA6AD		..RIVET		4
105	414T2053-1		..FOLLOWER-CAM		1
110	414T2053-2		..FOLLOWER-CAM		1
115	BACR15FR4E2		..RIVET		6
120	414T2055-7		..BRACKET-SPRING		1
125	414T2055-8		..BRACKET-SPRING		1
130	BACR15BA5AD		..RIVET		4
135	414T2055-3		..LUG		2
140	414T2051-8		..EXTENSION-SEAT BACK		1
145	414T2051-7		..EXTENSION-SEAT BACK		1
150	414T2054-1		..BEAM-SEAT BACK		1
155	414T2054-2		..BEAM-SEAT BACK		1
160	NO ASSIGNED P/N		..PAN		1

25-25-03



Seat Base Assembly
 Figure 7

529614

25-25-03

ILLUSTRATED PARTS LIST
 01.1 Page 1034
 Mar 01/02

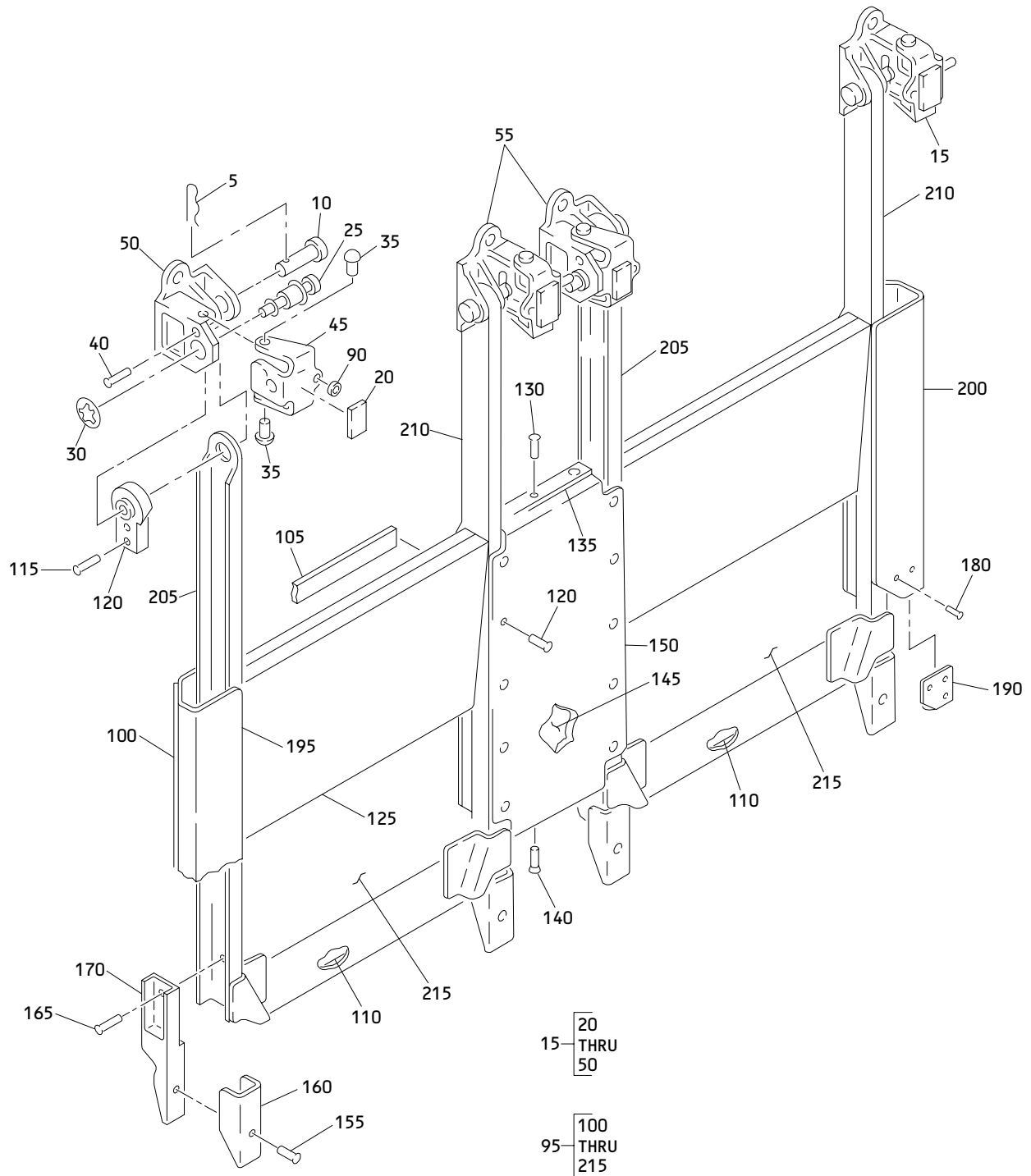
FIG. & ITEM	PART NO.	AIRLINE PART NUMBER	NOMENCLATURE 1234567	EFF CODE	QTY PER ASSY
07-					
-1	414T2025-1		BASE ASSY-SEAT		RF
5	BACN10JC08		.NUT		8
10	AN960PD8L		.WASHER		8
15	NAS514P832-6		.SCREW		8
20	414T2101-21		.PLATE-STRIKE		4
25	BACW10X4		.WASHER		2
30	BACS21Y5FR		.STUD ASSY		2
35	BACN10JC4		.NUT		4
40	BACS18C10-4		.BUSHING-FLANGED		4
45	AN960-416		.WASHER		4
50	BACB20Y4C022		.BUSHING		4
55	BACB30NF4-8		.BOLT		4
60	MS16562-16		.PIN		4
65	414T2101-19		.PIN		4
70	414T2101-1		.CAM ASSY		2
75	414T2101-2		.CAM ASSY		2
80	NAS538B4P018		..BUSHING-FLANGED		2
85	414T2101-15		..INSERT-CAM		1
90	414T2102-1		.CAM-(USED ON ITEM 70)		1
-95	414T2102-2		.CAM-(USED ON ITEM 75)		1
100	MS3217-1050		.CLIP		4
105	414T2022-1		.PIN-PIVOT		4
110	414T2101-14		.SLEEVE-SPRING		4
115	414T2105-1		.SPRING-RETURN		2
120	414T2105-2		.SPRING-RETURN		2
125	414T2107-3		.BRACKET ASSY-PIVOT		1
125A	414T2107-5		.BRACKET ASSY-PIVOT		1
130	414T2107-4		.BRACKET ASSY-PIVOT		1
130A	414T2107-6		.BRACKET ASSY-PIVOT		1
135	NAS537B4P36		.BUSHING		1
140	NAS537B4P50		.BUSHING		1
145	414T2101-18		..BUSHING-(USED ON ITEMS 125,130)		1
-145A	NAS538B8P022		..BUSHING-(USED ON ITEMS 125A,130A)		1
150	NAS538B8P017		..BUSHING-(USED ON ITEMS 125,130)		1

25-25-03

FIG. & ITEM	PART NO.	AIRLINE PART NUMBER	NOMENCLATURE 1234567	EFF CODE	QTY PER ASSY
07-					
-150A	414T2101-22		..BUSHING-(USED ON ITEMS 125A,130)		1
155	414T2103-3		..BRACKET-(USED ON ITEMS 125,125A)		1
-160	414T2103-4		..BRACKET-(USED ON ITEMS 130,130A)		1
165	414T2024-1		.PAN ASSY-SEAT		1
170	414T2024-3		..TAPE-VELCRO (HOOK)		1
175	414T2024-2		..PADDING		2
180	NAS1738E4-2		..RIVET		2
182	NAS1738E5-2		..RIVET		2
185	414T2023-6		..PLATE-JOINER		1
190	NAS1739E4-2		..RIVET		10
195	414T2023-5		..PLATE-JOINER		1
200	NAS1738E5-7		..RIVET		4
205	NAS1738E5-6		..RIVET		2
210	NAS1738E5-5		..RIVET		4
215	NAS1738E5-4		..RIVET		2
220	414T2023-4		..PLATE-JOINER		1
225	414T2106-5		..PAN ASSY-SEAT		2
230	414T2106-2		...TAPE-VELCRO (HOOK)		1
235	414T2106-4		...TAPE-VELCRO (HOOK)		1
240	BACR15BB4AD		...RIVET		2
245	414T2101-7		...RAIL ASSY-SIDE		1
250	414T2101-8		...RAIL ASSY-SIDE		1
255	BACB28XM050	BUSHING		1
260	BACR15BA6AD	RIVET		2
265	414T2101-6	SHIM		1
270	414T2103-3	ACTUTOR ASSY-CAM		1
275	BACR15BA4AD	RIVET		1
280	NAS42DD4-28	SPACER		1
285	414T2101-5	ACTUATOR		1
290	414T2101-9	ARM-SUPPORT (USED ON ITEM 245)		1
295	414T2101-10	ARM-SUPPORT (USED ON ITEM 250)		1
300	414T2104-5		...DOUBLER		1
305	NO ASSIGNED P/N		...PAN		1

25-25-03

 ILLUSTRATED PARTS LIST
 01 Page 1036
 Apr 10/84



Lower Seat Back Assembly
 Figure 8

25-25-03

ILLUSTRATED PARTS LIST
 01 Page 1038
 Apr 10/84

FIG. & ITEM	PART NO.	AIRLINE PART NUMBER	NOMENCLATURE 1234567	EFF CODE	QTY PER ASSY
08-					
-1	414T2030-1		BACK ASSY-SEAT, LWR		RF
5	AN415-5		.PIN		4
10	MS20392-3C27		.PIN		4
15	414T2050-2		.BRACKET ASSY-PIVOT		2
20	414T2050-11		..TAPE-VELCRO (PILE)		1
25	BACS21Y5FR		..STUD ASSY		1
30	BACW10X4		..WASHER		1
35	BACR15BB4AD		..RIVET		2
40	BACR15BA4AD		..RIVET		2
45	414T2351-4		..BRACKET		1
50	414T2052-1		..BRACKET-PIVOT		1
55	414T2052-3		.BRACKET ASSY-PIVOT		2
-60	414T2052-4		..TAPE-VELCRO (PILE)		1
-65	BACR15BB4AD		..RIVET		2
-70	BACR15BA4AD		..RIVET		2
-80	414T2351-4		..BRACKET		1
-85	414T2052-1		..BRACKET-PIVOT		1
90	BACG20AF4B2		.GROMMET-(OPT ITEM 90A)		4
-90A	BACG20C10		.GROMMET-(OPT ITEM 90)		4
95	414T2028-1		.PAN ASSY-BACK		1
100	414T2028-2		..TAPE-VELCRO (HOOK)		1
105	414T2028-3		..TAPE-VELCRO (HOOK)		1
110	414T2028-4		..TAPE-VELCRO (HOOK)		1
115	BACR15BA5AD		..RIVET		8
120	414T2055-3		..LUG		4
125	414T2251-62		..FOAM-RIGID		2
130	NAS1738E4-2		..RIVET		25
135	414T2023-2		..PLATE-JOINER		1
140	NAS1738E4-2		..RIVET		3
145	414T2023-3		..PLATE-JOINER		1
150	414T2023-7		..PLATE-JOINER		1
155	BACR15FR4E5		..RIVET		4
160	414T2055-5		..SLEEVE-CAM FOLLOWER		4
165	BACR15BA6AD		..RIVET		8
170	414T2053-1		..FOLLOWER-CAM		2
-175	414T2053-2		..FOLLOWER-CAM		2

25-25-03

FIG. & ITEM	PART NO.	AIRLINE PART NUMBER	NOMENCLATURE 1234567	EFF CODE	QTY PER ASSY
08-180	BACR15FR4E2		..RIVET		6
-185	414T2055-7		..BRACKET-SPRING		1
190	414T2055-8		..BRACKET-SPRING		1
195	414T2051-8		..EXTENSION-SEAT BACK		1
200	414T2051-7		..EXTENSION-SEAT BACK		1
205	414T2054-1		..BEAM-SEAT BACK		2
210	414T2054-2		..BEAM-SEAT BACK		2
215	NO ASSIGNED P/N		..PAN		2

25-25-03

ILLUSTRATED PARTS LIST
 01 Page 1040
 Apr 10/84